



OKLAHOMA

WEEK 2 - NO. 2 OKLAHOMA AT NO. 9 AUBURN

7 P.M. (CT) | Beard-Eaves Memorial Coliseum | Auburn, Ala.



Live Stats: AuburnTigers.com
 Web cast AuburnTigers.com
 Series Record AU leads, 4-3
 @ Auburn AU leads, 2-1
 Last Meeting... '08 @Norman |196.750-195.900 (W)



OKLAHOMA SOONERS (1-0, 0-0 BIG 12)

2010 TROESTER RANKINGS
 Team: 196.250 (2nd)
 Vault: 48.950 (7th) | Bars: 49.175 (3rd)
 Beam: 49.025 (2nd) | Floor: 49.100 (2nd)

AUBURN TIGERS (0-1, 0-1 SEC)

2010 TROESTER RANKINGS
 Team: 195.200 (9th)
 Vault: 48.775 (14th) | Bars: 48.925 (7th)
 Beam: 48.925 (5th) | Floor: 48.575 (18th)

AT A GLANCE:

The second-ranked OU women's gymnastics squad hits the road for the first time in 2010, travelling to No. 9 Auburn on Friday for a dual meet with the Tigers inside Beard-Eaves Memorial Coliseum at 7 p.m. (CT).

The Sooners (1-0, 0-0 Big 12) enter the meet off of a wire-to-wire upset of No. 4 Florida in which Oklahoma posted its highest season-opening score in program history (196.250). The victory over the Gators marked the highest ranked opponent that OU has toppled under fourth-year head coach K.J. Kindler.

Oklahoma's second-place ranking is the highest in program history, as the Sooners posted the second-best beam (49.025) and floor (49.100) scores in the NCAA during the first week of competition.

Auburn (0-1, 0-1 SEC) dropped a 195.650-195.200 decision to in-state rival Alabama in its season opener on Jan. 9. The Tigers rank in the top 10 nationally on beam (No. 5 - 48.925) and bars (No. 7 - 48.925).

Friday's meet will serve as Auburn's annual "Flip for the Cure" night, with "Flip for the Cure" t-shirts on sale for \$10 with all proceeds benefitting East Alabama Medical Center.

Phillip Rogers, Women's Gymnastics Communications
 180 W. Brooks, Suite 2525, Norman, OK 73019
 O: (405) 325-8413 | C: (405) 880-0794 | F: (405) 325-7623
 philliprogers@ou.edu | www.SoonerSports.com

ON THE WEB

OU's home meets can be seen via a live web cast with commentary from Sooner All-American Kasie Tamayo and Ashley Alden on Oklahoma All-Access, SoonerSports.com's premium site. Live stats for all meets can be found on SoonerSports.com.

TICKETS

For home meet tickets, call (405) 325-2424 or toll-free (800) 456-GoOU. Tickets can also be purchased at the main ticket office in Gaylord Family-Oklahoma Memorial Stadium or at Lloyd Noble Center on the day of the meet.

PRACTICE POLICY

Practices have resumed at the Sam Viersen Center, directly north and across the street (Imhoff) from the Lloyd Noble Center. Practices are typically open to media. However, those who wish to attend must obtain clearance through Phillip Rogers in the OU Communication Office prior to the start of practice. Practice generally runs from 10:30 a.m. to 2:30 p.m. The best time to conduct interviews is immediately following practice.

CREDENTIAL REQUESTS

Media credentials for home contests at the Lloyd Noble Center should be requested no later than one day prior to the event. All requests should be directed to Phillip Rogers in the Communications Office at (405) 325-8413 or by e-mail to philliprogers@ou.edu.

POST-MEET INFORMATION

Post-meet interviews will take place on the main floor of the Lloyd Noble Center after head coach K.J. Kindler dismisses her athletes. Official score sheets will be available at the scorer's table.

MEDIA INTERVIEWS

Non-postmeet interview requests for athletes and coaches must be arranged through Phillip Rogers in the Communications Office. All requests should be submitted at least one day in advance of the desired interview time.



The official site of OU Athletics supplies Sooner fans worldwide with the latest news and features on Oklahoma athletics direct from Norman. The site provides the latest press releases, rosters, bios, schedules, statistics, notes, quotes and photo galleries available to both Sooner fans and the media.

DATE	OPPONENT	LOCATION	TIME/RESULT
1.8	FLORIDA	LOYD NOBLE CENTER	(W) 196.250-195.275
1.15	@ Auburn	Auburn, Ala.	7 p.m.
1.23	@ Illinois	Champaign, Ill.	7 p.m.
1.30	Metroplex Challenge	Dallas, Texas	7 p.m.
2.5	NEBRASKA / TWU	LOYD NOBLE CENTER	7 P.M.
2.12	IOWA STATE	LOYD NOBLE CENTER	7 P.M.
2.19	@ Missouri	Columbia, Mo.	6:30 p.m.
2.26	@ Michigan State	East Lansing, Mich.	6 p.m.
3.5	ALABAMA	LOYD NOBLE CENTER	7 P.M.
3.12	WASHINGTON	LOYD NOBLE CENTER	7 P.M.
3.19	@ Arkansas	Fayetteville, Ark.	7 p.m.
3.27	Big 12 Championships	Lincoln, Neb.	2 p.m.
4.10	NCAA Regionals	TBA	TBA
4.22-24	NCAA Championships	Gainesville, Fla.	TBA

NAME	HEIGHT	YEAR	HOMETOWN (HIGH SCHOOL)	CLUB	PRONUNCIATION
Cindell, Candace	5-5	Jr.	Frisco, Texas (Frisco HS)	Kurt Thomas Gymnastics	sin-DELL
Ferguson, Megan	4-11	So.	Olathe, Kan. (Blue Valley HS)	Eagles Gymnastics	
Flanery, Jacqueline	5-5	Sr.	Plattsburg, Mo. (Plattsburg HS)	Eagles Gymnastics	
Kelley, Natasha	5-4	R-Fr.	Katy, Texas (Home schooled)	Cypress Academy	
Kramer, Julie	5-2	Sr.	Uvalde, Texas (Baylor Univ. / Uvalde HS)	Acrotex Gymnastics	
Mantle, Mary	5-4	Sr.	Ft. Collins, Colo. (Rocky Mountain HS)	GK Gymnastics	
Neubauer, Bethany	5-2	Fr.	Edmond, Okla. (Edmond North HS)	Dynamo Gymnastics	
Nowak, Kayla	5-2	Fr.	Algonquin, Ill. (Huntley HS)	Illinois Gymnastics Institute	no-VAK
Olson, Brie	5-2	Fr.	St. Cloud, Minn. (Rocori HS)	Ultimate Gymnastics	BREE
Ramaswami, Nitya	5-4	Fr.	Ames, Iowa (Ames HS)	Success Gymnastics	knih-t-YUH ROM-uh-swam-ee
Ratcliff, Natalie	5-5	Jr.	Overland Park, Kan. (Blue Valley Northwest HS)	GAGE	
Root, Melanie	5-3	Jr.	Cartersville, Ga. (Cartersville HS)	Cartersville Twisters	
Smith, Kristin	5-3	Sr.	Oklahoma City, Okla. (Putnam City HS)	Dynamo Gymnastics	
Stone, Sara	5-4	So.	Dallas, Texas (Spring Creek Academy)	Metroplex Gymnastics	
Vise, Hollie	5-5	Sr.	Dallas, Texas (Spring Creek Academy)	WOGA	VICE

COACHING STAFF

K.J. Kindler – Head Coach (Fourth Year) | Lou Ball – Assistant Coach (Fourth Year) | Tom Haley – Assistant Coach (Fourth Year)



CANDACE **CINDELL**



MEGAN **FERGUSON**



JACKIE **FLANERY**



NATASHA **KELLEY**



JULIE **KRAMER**



MARY **MANTLE**



BETHANY **NEUBAUER**



KAYLA **NOWAK**



BRIE **OLSON**



NITYA **RAMASWAMI**



NATALIE **RATCLIFF**



MELANIE **ROOT**



KRISTIN **SMITH**



SARA **STONE**



HOLLIE **VISE**

GYMNAST TO WATCH:

Jackie Flanery



The reigning Big 12 Event Specialist of the Week honoree posted event wins on bars and floor in OU's upset victory over No. 4 Florida on Jan. 8.

Flanery posted a career-high 9.85 on bars in her first routine on the apparatus since the 2008 season, before sealing the season-opening win with a 9.875 on floor from the anchor position.

Flanery is tied nationally at No. 7 on floor and stands ninth on bars in the latest individual rankings. Her 36 career appearances on floor is second only to fellow senior Kristin Smith.

CURRENT RANKINGS:

RANK	TEAM	AVERAGE	HIGH
1	UCLA	196.600	196.600
2	OKLAHOMA	196.250	196.250
3	Nebraska [^]	195.700	195.700
4	Alabama [^]	195.650	195.650
5	Oregon State	195.625	195.625
6	Denver	195.575	195.575
7	Arkansas [^]	195.400	195.400
8	Florida [^]	195.275	195.275
9	Auburn [^]	195.200	195.200
10	Georgia	195.150	195.150
11	Utah	195.125	195.125
12	Stanford	195.050	195.050
13	Michigan	194.875	194.875
14	Kentucky	194.850	194.850
15	Missouri [^]	194.725	194.725
16	LSU	194.375	194.375
17	Michigan State [^]	193.925	193.925
18	Penn State	193.900	193.900
19	Washington [^]	193.450	193.450
20	Minnesota	193.375	193.375
21	Iowa State [^]	193.300	193.300
22	Iowa	193.200	193.200
23	Illinois [^]	192.850	192.850
24	San Jose State	191.800	191.800
25	West Virginia	191.225	191.225

[^] — Denotes OU's regular season opponents.

The Sooners face 10 squads ranked in the preseason top-25 coaches poll, including three ranked in the top 10.

GYMINFO RANKING SCHEDULE:

Through Feb. 8, the teams are ranked by total season average. Beginning Feb. 15, the ranking is done by Regional Qualifying Score which consists of a team's three highest road scores and the next three highest scores. The high score is subtracted from the six event totals and the remaining amount is divided by five.)

All-Time Series | AU leads 4-3

DATE	LOCATION	RESULT	OU	AU	MARGIN
2008	Norman	W	196.750	195.900	+0.850
2005	Auburn	W	195.000	191.900	+3.100
2003	NCAA (C. Regional)	L	196.300	196.350	-0.050
1997	Auburn	L	189.850	193.850	-4.000
1996	Norman	W	192.350	191.450	+0.900
1995	NIT	L	192.325	193.225	-0.100
1990	Auburn	L	181.950	183.300	-1.350

ROTATION SCHEDULE

Rotation	Vault	Bars	Beam	Floor
1	Auburn	OKLAHOMA		
2	OKLAHOMA	Auburn		
3			Auburn	OKLAHOMA
4			OKLAHOMA	Auburn

CLOSER LOOK AT AUBURN

Auburn returns 14 letterwinners from last year's squad that was ranked as high as fourth in the nation and in the top 10 for the first nine weeks of the season. The Tigers' roster features a bevy of underclassmen (seven sophomores and six freshmen), while only nine gymnasts on the 2010 roster have performed a collegiate routine. AU must replace 2009 seniors Lindsay Puckett and A.J. Mills, who combined for 79 career titles at Auburn.

REGULAR SEASON SENSATIONS

Oklahoma is 42-6 in the regular season under K.J. Kindler. The Sooners went 10-4 during the regular season in 2009, with three of those losses coming on the road (Florida, Nebraska and Alabama).

SEC FAMILIARITY

OU will face four teams from the Southeastern Conference during the regular season, including two straight to begin the 2010 season with Oklahoma's meet at Auburn after its home opener against Florida. Oklahoma faces Alabama in Norman on March 5, in the eighth meeting between the two programs over the last four seasons, before travelling to Arkansas on March 19.

SOONERS AGAINST THE SEC

Oklahoma is 5-18 against teams from the Southeastern Conference under fourth-year head coach K.J. Kindler. That figure is skewed slightly as 17 of the 23 meetings have come in NCAA postseason competition against the upper echelon of the SEC. The Sooners are 2-4 against SEC foes in the regular season, with wins over Arkansas (2008) and Florida (2010).

"ON" THE ROAD AGAIN

The Sooners seek some of the same road success in 2010 that they have exhibited in recent years. Five of OU's top seven scores (including a season-high 197.175 at TWU) came away from Norman in 2009, a year after five of Oklahoma's top seven scores (including three of the top four and a season-best-tying 196.750 at Arkansas) came on the road. Oklahoma was the only squad in the top 10 to have both of its top two scores from 2009 come in road competition.

OU's 197.175-189.600 victory at TWU last season marked its best team score since Jan. 24, 2004 (197.300).

DAZZLING DEBUT

Eight of Oklahoma's 24 routines in the season opener were performed by freshmen, including at least two on every event other than floor. The group posted an average score of 9.79 against Florida, with a pair of 9.85s from Natasha Kelley (bars) and Kayla Nowak (floor). Every score amongst the group was at least a 9.7, while each freshman that competed scored at least a 9.8 in one of their routines.

FAMILIAR FACES

Friday's meeting with Auburn will mark the 18th time the Sooners have faced a team from the state of Alabama since 2003. AU and OU have squared off on three occasions since '03, while Oklahoma has faced Alabama, the other collegiate squad from the Yellowhammer State, 15 times during that period.

QUICK FACTS:

GENERAL INFORMATION

Location	Norman, Okla.
Enrollment	30,092
Founded	1890
President	David L. Boren
VP/Athletics Director	Joe Castiglione
Nickname	Sooners
Colors	Crimson & Cream
Conference	Big 12
Arena	Lloyd Noble Center
Capacity	12,000

TEAM INFORMATION

2009 Overall Record	19-14
2009 High Score	197.175 (@TWU — 1.17.2009)
Big 12 Finish	First
NCAA Finish	10th
Letterwinners Returning/Lost	10/4
All-Americans Returning/Lost	1/0

COACHING STAFF

Head Coach	K.J. Kindler
Year	Fourth Season
Alma Mater	Iowa State, 1992
Record at OU	65-33-2
Career Record	123-59-3
Assistant Coach	Lou Ball
Year	Fourth Season
Alma Mater	Iowa State, 1999
Assistant Coach	Tom Haley
Year	Fourth Season

Women's Gymnastics Office Phone	(405) 325-6876
Women's Gymnastics Office Fax	(405) 325-8337

MARCH-IN ORDER:

NAME	HEIGHT	YEAR	HOMETOWN
Neubauer, Bethany	5-2	Fr.	Edmond, Okla.
Nowak, Kayla	5-2	Fr.	Algonquin, Ill.
Olson, Brie	5-2	Fr.	St. Cloud, Minn.
Ramaswami, Nitya	5-4	Fr.	Ames, Iowa
Kelley, Natasha	5-4	R-Fr.	Katy, Texas
Ferguson, Megan	4-11	So.	Olathe, Kan.
Stone, Sara	5-4	So.	Dallas, Texas
Cindell, Candace	5-5	Jr.	Frisco, Texas
Ratcliff, Natalie	5-5	Jr.	Overland Park, Kan.
Root, Melanie	5-3	Jr.	Cartersville, Ga.
Flanery, Jacqueline	5-5	Sr.	Plattsburg, Mo.
Kramer, Julie	5-2	Sr.	Uvalde, Texas
Mantle, Mary	5-4	Sr.	Ft. Collins, Colo.
Smith, Kristin	5-3	Sr.	Oklahoma City, Okla.
Vise, Hollie	5-5	Sr.	Dallas, Texas

NO "I" IN TEAM

OU has found a way to win lately despite the lack of a true all-around presence. Oklahoma did not have an all-arounder compete against Florida, while the Sooners were the only squad ranked in the final 2009 top-15 GymInfo poll without a gymnast in the top-25 all-around rankings.

WISE "FLOORS" THE CROWD

Strictly a bars and beam specialist during her first three seasons in Norman, Hollie Vise performed her first collegiate routine on floor against the Gators. The Dallas, Texas, native scored a 9.825 on the apparatus, OU's third-highest score on the event in the season opener.

IN ELITE COMPANY

The Sooners are one of just six squads to advance to the NCAA Championships every year since 2004, joining Alabama, Florida, Georgia, LSU and Utah on that elite list. OU's six championship appearances in the last six years matches the other three Big 12 programs combined during that period. Nebraska advanced to the NCAA Championships from 2004-07, while Iowa State made back-to-back appearances in 2005 and 2006 under K.J. Kindler.

HOME SWEET HOME

The Sooners are 23-2 in Norman under fourth-year head coach K.J. Kindler. OU's only two losses at home have come against SEC opponents in Alabama and Arkansas. Top-seeded Alabama knocked off the Sooners en route to the NCAA South Central Regional title in 2008, while OU's loss to Arkansas in the 2009 home opener marked Oklahoma's only regular season home defeat in Kindler's tenure.

Among the 55 home wins since 2000 are notable victories over Auburn, Georgia, Florida, Illinois, Iowa State, Missouri, Nebraska, Penn State, Stanford and West Virginia.

TWO TOP COACHES

OU's season opener featured two recent recipients of the National Association of Collegiate Gymnastics Coaches (NACGC) Coach of the Year award. K.J. Kindler received the accolade in 2005 while at Iowa State, while Florida's Rhonda Faehn was named the national coach of the year in 2007.

CLOSER LOOK AT OKLAHOMA IN 2010

The back-to-back Big 12 Champions opened the 2010 season ranked ninth in the GymInfo preseason coaches poll, the highest ranking of any conference squad. The Sooners return 11 members from last season's group that clinched OU's second straight conference title.

Headlining OU's returnees is sophomore All-American Megan Ferguson. The Olathe, Kan., native capped off her stellar freshman campaign by garnering All-America status on beam at the 2009 NCAA Championships. She became the first freshman in Big 12 history to win multiple event titles at the conference championship (bars and beam).

Other returnees include All-Big 12 selections in Jackie Flanery (floor - 2008), Melanie Root (vault - 2009), Kristin Smith (floor - 2009) and Hollie Vise (bars - 2008, beam - 2008, 2009). The quartet has combined for nine Big 12 Event Specialist of the Week honors in the past two seasons.

Also returning in 2010 are event title winners Mary Mantle (Big 12 Event Specialist of the Week on Feb. 12, 2008, after her vault win at Denver) and Sara Stone (three vault titles in 2009).

This season also marks the final send-off for Julie Kramer, while other returnees include juniors Candace Cindell and Natalie Ratcliff. Ratcliff was a mainstay in the vault and beam lineup a year ago.

OU gymnastics fans also will have their first chance to see Oklahoma's freshman class of Bethany Neubauer, Kayla Nowak, Brie Olson and Nitya Ramaswami. The class was ranked No. 9 in the country by CollegeGymFans.com.

STELLAR YEAR IN THE CLASSROOM

Nine OU gymnasts earned 2009 NACGC All-Academic Scholar awards as the Sooners posted their highest GPA since 2004. Oklahoma's nine honorees was third best among teams advancing to last year's NCAA Championship, behind only Alabama (13) and Stanford (10).



K.J. KINDLER
Head Coach | Fourth Season

COACHING EXPERIENCE

- Head Coach (Oklahoma, 2006-Present)
- Head Coach (Iowa State, 2001-2006)
- Assistant Coach (Iowa State, 1992-2001)

CAREER COACHING HIGHLIGHTS

- Coached Oklahoma to sixth straight NCAA Championships appearance in 2009
- Guided freshman Megan Ferguson to All-America status on beam in 2009
- Led three gymnasts to individual event titles at 2009 Big 12 Championship
- Positioned the Sooners in the top 10 on all four events in 2009 in final RQS standings
- Clinched back-to-back Big 12 titles in 2008 and 2009
- Led OU to program-best eighth place finish at 2007 and '08 NAAs
- Named 2008 Big 12 Coach of the Year
- Only squad to post undefeated regular season in 2008 (18-0)
- Oklahoma gymnasts earned four All-America honors in 2008
- Guided Sooners to four event titles at 2008 Big 12 Championship
- Led OU to four individual event crowns at '08 Big 12 Championship
- Coached 2008 Big 12 Gymnast of the Year Kiara Redmond
- Led Iowa State to the program's first Super Six in 2006
- Won 2006 Big 12 Championship with Iowa State
- Produced three All-Americans in three seasons (2000, 2005, 2006)
- 2004 and 2006 NCAA Regional Coach of the Year
- Four-time Big 12 Coach of the Year (2004, 2005, 2006, 2008)
- 2005 NACGCW Coach of the Year
- Coached nine NCAA Regional event champions
- Qualified 11 gymnasts for the NCAA individual championships
- Coached 25 Big 12 champions (including three all-arounders)

FOLLOWING THE SOONERS

The OU gymnastics program maintains its own Facebook, YouTube and Twitter accounts, which are updated frequently with all of the latest news about the squad. Links to each of those pages can be found at www.SoonerSports.com, the official site of the Oklahoma Sooners.

KINDLER TABS THREE TO 2011 CLASS

Head Coach K.J. Kindler announced the signing of three gymnasts to National Letters of Intent on Nov. 11, the first day of the early signing period. All hailing from the Lone Star state, the trio of Lauren Alexander (Plano, Texas), Hope Bruce (Denton, Texas) and Taylor Spears (Plano, Texas) will cross the Red River to join the Sooners next fall.

Bruce is a Junior International Elite qualifier, while Alexander and Spears both excelled at JO Nationals prior to signing with the Sooners.

PRACTICE MAKES PERFECT

If the old adage rings true, the Sooners should be on top of their game in 2010 as the team recently moved into of the top training gyms in the entire country. OU recently completed a state-of-the-art 7,000 square foot addition and a complete overhaul of the existing Sam Viersen Gymnastics Center for the men's and women's gymnastics squads.

Funded entirely by private donations without the use of any state or university appropriated funds, the project included a complete renovation of the current gym, locker rooms, sports medicine training rooms and the awards recognition room. A new storage area, a reconfiguration of foam and resi pits and an outdoor patio also highlighted the renovation.

2010 HIGHS

NAME	VAULT	BARS	BEAM	FLOOR	All-AROUND
Candace Cindell	-	-	-	-	-
Megan Ferguson	-	9.825	9.875	9.775	-
Jackie Flanery	9.8	9.85	-	9.875	-
Natasha Kelley	-	9.85	9.8	-	-
Julie Kramer	-	-	-	-	-
Mary Mantle	9.85	-	-	9.775	-
Bethany Neubauer	9.8	-	-	-	-
Kayla Nowak	-	9.775	9.7	9.85	-
Brie Olson	9.75	9.8	-	-	-
Nitya Ramaswami	-	-	-	-	-
Natalie Ratcliff	9.75	-	9.675	-	-
Melanie Root	-	-	-	-	-
Kristin Smith	-	-	9.75	9.275	-
Sara Stone	9.7	-	-	-	-
Hollie Vise	-	9.85	9.9	9.825	-

CAREER HIGHS

VAULT	BARS	BEAM	FLOOR	All-AROUND
-	-	-	-	-
-	9.9	9.925	9.85	-
9.85	9.85	-	9.9	-
-	9.85	9.8	-	-
-	-	-	-	-
9.9	9.825	-	9.8	-
9.8	-	-	-	-
-	9.775	9.7	9.85	-
9.75	9.8	-	-	-
-	-	-	-	-
9.85	-	9.875	-	-
9.9	9.875	-	9.75	-
-	-	9.925	9.9	-
9.9	-	-	9.825	-
-	9.9	9.95	9.825	-

SEASON BESTS (INDIVIDUAL)

EVENT	SCORE	GYMNAST	DATE
All-Around	-	-	-
Vault	9.85	Mantle	1.8
Bars	9.85	Flanery, Kelley, Vise	1.8
Beam	9.9	Vise	1.8
Floor	9.875	Flanery	1.8

SEASON BESTS (TEAM)

EVENT	SCORE	OPPONENT	DATE
Team	196.250	Florida	1.8
Vault	48.950	Florida	1.8
Bars	49.175	Florida	1.8
Beam	49.025	Florida	1.8
Floor	49.100	Florida	1.8

PROGRAM BESTS (INDIVIDUAL)

EVENT	SCORE	GYMNAST	YEAR
All-Around	39.7	Kasie Tamayo	2004
Vault	10.00	Kiara Redmond	2008
Bars	10.00	Erin LaBarr	2005
Beam	10.00	Kasie Tamayo	2002
Floor	10.00	Patricia Aoki	2003

PROGRAM BESTS (TEAM)

EVENT	SCORE	OPPONENT	YEAR
Team	197.725	Arizona	2003
Vault	49.575	Iowa State	2002
Bars	49.550	Arizona	2003
Beam	49.675	Arizona	2003
Floor	49.675	TWU/Centenary	2003

2010 ACCOLADES

Jackie Flanery Big 12 Event Specialist of the Week 1.12

2010 SCORING BREAKDOWN

DATE	MEET	TEAM	TEAM SCORE	VAULT	BAR	BEAM	FLOOR	RANK
1/8	Florida	OU	196.250	48.950	49.175	49.025	49.100	9
		UF	195.275	49.300	48.175	48.875	48.925	4

1/15 @Auburn

HOME: 1-0 AWAY: 0-0 NEUTRAL: 0-0 BIG 12: 0-0 VS. THE TOP 25: 1-0 VS. THE TOP 10: 1-0

2010 OKLAHOMA TEAM SUPERLATIVES

TEAM SCORE

1. 196.250..... vs. No. 4 Florida (Jan. 8)

VAULT

1. 48.950..... vs. No. 4 Florida (Jan. 8)

BARS

1. 49.175..... vs. No. 4 Florida (Jan. 8)

BEAM

1. 49.025..... vs. No. 4 Florida (Jan. 8)

FLOOR

1. 49.100..... vs. No. 4 Florida (Jan. 8)

2010 OKLAHOMA INDIVIDUAL SUPERLATIVES

ALL-AROUND

1. N/A.....

VAULT

1. 9.850..... Mary Mantle

2. 9.800..... Jackie Flanery

9.800..... Bethany Neubauer

4. 9.750..... Brie Olson

9.750..... Natalie Ratcliff

BARS

1. 9.850..... Jackie Flanery

9.850..... Natasha Kelley

9.850..... Hollie Vise

4. 9.825..... Megan Ferguson

5. 9.800..... Brie Olson

BEAM

1. 9.900..... Hollie Vise

2. 9.875..... Megan Ferguson

3. 9.800..... Natasha Kelley

4. 9.750..... Kristin Smith

5. 9.700..... Kayla Nowak

FLOOR

1. 9.875..... Jackie Flanery

2. 9.850..... Kayla Nowak

3. 9.825..... Hollie Vise

4. 9.775..... Megan Ferguson

9.775..... Mary Mantle

2010 OKLAHOMA MEET-BY-MEET LINEUP

FLA	AUB	ILL	METRO	NEB	ISU	MIZZ	MSU	ALA	WASH	ARK	BIG 12
VAULT Flanery Stone Olson Neubauer Ratcliff Mantle	VAULT	VAULT	VAULT	VAULT	VAULT	VAULT	VAULT	VAULT	VAULT	VAULT	VAULT
BARS Flanery Olson Nowak Ferguson Kelley Vise	BARS	BARS	BARS	BARS	BARS	BARS	BARS	BARS	BARS	BARS	BARS
BEAM Ratcliff Nowak Kelley Ferguson Vise Smith	BEAM	BEAM	BEAM	BEAM	BEAM	BEAM	BEAM	BEAM	BEAM	BEAM	BEAM
FLOOR Mantle Ferguson Vise Nowak Smith Flanery	FLOOR	FLOOR	FLOOR	FLOOR	FLOOR	FLOOR	FLOOR	FLOOR	FLOOR	FLOOR	FLOOR

2010 EVENT WINS (TEAM)

EVENT	SCORE	OPPONENT	DATE
Vault (0)			
Bars (1)	49.175	Florida	1.8
Beam (1)	49.025	Florida	1.8
Floor (1)	49.100	Florida	1.8

2010 EVENT WINS (INDIVIDUAL)

NAME (SEASON WINS)	EVENT	OPPONENT
Jackie Flanery (2)	Bars	Florida
	Floor	Florida
Hollie Vise (2)	Bars	Florida
	Beam	Florida
Natasha Kelley (1)	Bars	Florida

MEET-BY-MEET LEADERS

FLORIDA - 1.9.2010 | NORMAN

EVENT	SCORE	GYMNAST
All-Around	-	-
Vault	9.85	Mantle
Bars	9.85	Flanery, Kelley, Vise
Beam	9.9	Vise
Floor	9.875	Flanery

@AUBURN - 1.15

EVENT	SCORE	GYMNAST
All-Around	-	-
Vault	-	-
Bars	-	-
Beam	-	-
Floor	-	-

@ILLINOIS - 1.23

EVENT	SCORE	GYMNAST
All-Around	-	-
Vault	-	-
Bars	-	-
Beam	-	-
Floor	-	-

@METROPLEX CHALLENGE - 1.30

EVENT	SCORE	GYMNAST
All-Around	-	-
Vault	-	-
Bars	-	-
Beam	-	-
Floor	-	-

NEBRASKA/TWU - 2.5

EVENT	SCORE	GYMNAST
All-Around	-	-
Vault	-	-
Bars	-	-
Beam	-	-
Floor	-	-

IOWA STATE - 2.12

EVENT	SCORE	GYMNAST
All-Around	-	-
Vault	-	-
Bars	-	-
Beam	-	-
Floor	-	-

@MISSOURI - 2.19

EVENT	SCORE	GYMNAST
All-Around	-	-
Vault	-	-
Bars	-	-
Beam	-	-
Floor	-	-

@MICHIGAN STATE - 2.26

EVENT	SCORE	GYMNAST
All-Around	-	-
Vault	-	-
Bars	-	-
Beam	-	-
Floor	-	-

ALABAMA - 3.5

EVENT	SCORE	GYMNAST
All-Around	-	-
Vault	-	-
Bars	-	-
Beam	-	-
Floor	-	-

WASHINGTON - 3.12

EVENT	SCORE	GYMNAST
All-Around	-	-
Vault	-	-
Bars	-	-
Beam	-	-
Floor	-	-

@ARKANSAS - 3.19

EVENT	SCORE	GYMNAST
All-Around	-	-
Vault	-	-
Bars	-	-
Beam	-	-
Floor	-	-

@BIG 12 CHAMPIONSHIP - 3.27

EVENT	SCORE	GYMNAST
All-Around	-	-
Vault	-	-
Bars	-	-
Beam	-	-
Floor	-	-

@NCAA REGIONAL - 4.10

EVENT	SCORE	GYMNAST
All-Around	-	-
Vault	-	-
Bars	-	-
Beam	-	-
Floor	-	-



CANDACE CINDELL

Date	Event	Vault	Bars	Beam	Floor	AA
1.08	Florida	-	-	-	-	-
1.15	@Auburn	-	-	-	-	-
1.23	@Illinois	-	-	-	-	-
1.30	Metroplex Challenge	-	-	-	-	-
2.05	Nebraska/TWU	-	-	-	-	-
2.12	Iowa State	-	-	-	-	-
2.19	@Missouri	-	-	-	-	-
2.26	@Michigan State	-	-	-	-	-
3.05	Alabama	-	-	-	-	-
3.12	Washington	-	-	-	-	-
3.19	@Arkansas	-	-	-	-	-
3.27	Big 12 Championship	-	-	-	-	-
4.10	NCAA Regional	-	-	-	-	-



MEGAN FERGUSON

Date	Event	Vault	Bars	Beam	Floor	AA
1.08	Florida	-	9.825	9.875	9.775	-
1.15	@Auburn	-	-	-	-	-
1.23	@Illinois	-	-	-	-	-
1.30	Metroplex Challenge	-	-	-	-	-
2.05	Nebraska/TWU	-	-	-	-	-
2.12	Iowa State	-	-	-	-	-
2.19	@Missouri	-	-	-	-	-
2.26	@Michigan State	-	-	-	-	-
3.05	Alabama	-	-	-	-	-
3.12	Washington	-	-	-	-	-
3.19	@Arkansas	-	-	-	-	-
3.27	Big 12 Championship	-	-	-	-	-
4.10	NCAA Regional	-	-	-	-	-



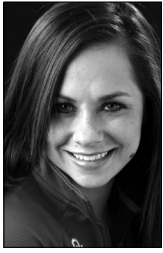
JACKIE FLANERY

Date	Event	Vault	Bars	Beam	Floor	AA
1.08	Florida	9.800	9.850	-	9.875	-
1.15	@Auburn	-	-	-	-	-
1.23	@Illinois	-	-	-	-	-
1.30	Metroplex Challenge	-	-	-	-	-
2.05	Nebraska/TWU	-	-	-	-	-
2.12	Iowa State	-	-	-	-	-
2.19	@Missouri	-	-	-	-	-
2.26	@Michigan State	-	-	-	-	-
3.05	Alabama	-	-	-	-	-
3.12	Washington	-	-	-	-	-
3.19	@Arkansas	-	-	-	-	-
3.27	Big 12 Championship	-	-	-	-	-
4.10	NCAA Regional	-	-	-	-	-



NATASHA KELLEY

Date	Event	Vault	Bars	Beam	Floor	AA
1.08	Florida	-	9.850	9.800	-	-
1.15	@Auburn	-	-	-	-	-
1.23	@Illinois	-	-	-	-	-
1.30	Metroplex Challenge	-	-	-	-	-
2.05	Nebraska/TWU	-	-	-	-	-
2.12	Iowa State	-	-	-	-	-
2.19	@Missouri	-	-	-	-	-
2.26	@Michigan State	-	-	-	-	-
3.05	Alabama	-	-	-	-	-
3.12	Washington	-	-	-	-	-
3.19	@Arkansas	-	-	-	-	-
3.27	Big 12 Championship	-	-	-	-	-
4.10	NCAA Regional	-	-	-	-	-



JULIE KRAMER

Date	Event	Vault	Bars	Beam	Floor	AA
1.08	Florida	-	-	-	-	-
1.15	@Auburn	-	-	-	-	-
1.23	@Illinois	-	-	-	-	-
1.30	Metroplex Challenge	-	-	-	-	-
2.05	Nebraska/TWU	-	-	-	-	-
2.12	Iowa State	-	-	-	-	-
2.19	@Missouri	-	-	-	-	-
2.26	@Michigan State	-	-	-	-	-
3.05	Alabama	-	-	-	-	-
3.12	Washington	-	-	-	-	-
3.19	@Arkansas	-	-	-	-	-
3.27	Big 12 Championship	-	-	-	-	-
4.10	NCAA Regional	-	-	-	-	-



MARY MANTLE

Date	Event	Vault	Bars	Beam	Floor	AA
1.08	Florida	9.850	-	-	9.775	-
1.15	@Auburn	-	-	-	-	-
1.23	@Illinois	-	-	-	-	-
1.30	Metroplex Challenge	-	-	-	-	-
2.05	Nebraska/TWU	-	-	-	-	-
2.12	Iowa State	-	-	-	-	-
2.19	@Missouri	-	-	-	-	-
2.26	@Michigan State	-	-	-	-	-
3.05	Alabama	-	-	-	-	-
3.12	Washington	-	-	-	-	-
3.19	@Arkansas	-	-	-	-	-
3.27	Big 12 Championship	-	-	-	-	-
4.10	NCAA Regional	-	-	-	-	-



BETHANY NEUBAUER

Date	Event	Vault	Bars	Beam	Floor	AA
1.08	Florida	9.800	-	-	-	-
1.15	@Auburn	-	-	-	-	-
1.23	@Illinois	-	-	-	-	-
1.30	Metroplex Challenge	-	-	-	-	-
2.05	Nebraska/TWU	-	-	-	-	-
2.12	Iowa State	-	-	-	-	-
2.19	@Missouri	-	-	-	-	-
2.26	@Michigan State	-	-	-	-	-
3.05	Alabama	-	-	-	-	-
3.12	Washington	-	-	-	-	-
3.19	@Arkansas	-	-	-	-	-
3.27	Big 12 Championship	-	-	-	-	-
4.10	NCAA Regional	-	-	-	-	-



KAYLA NOWAK

Date	Event	Vault	Bars	Beam	Floor	AA
1.08	Florida	-	9.775	9.700	9.850	-
1.15	@Auburn	-	-	-	-	-
1.23	@Illinois	-	-	-	-	-
1.30	Metroplex Challenge	-	-	-	-	-
2.05	Nebraska/TWU	-	-	-	-	-
2.12	Iowa State	-	-	-	-	-
2.19	@Missouri	-	-	-	-	-
2.26	@Michigan State	-	-	-	-	-
3.05	Alabama	-	-	-	-	-
3.12	Washington	-	-	-	-	-
3.19	@Arkansas	-	-	-	-	-
3.27	Big 12 Championship	-	-	-	-	-
4.10	NCAA Regional	-	-	-	-	-



BRIE OLSON

Date	Event	Vault	Bars	Beam	Floor	AA
1.08	Florida	9.750	9.800	-	-	-
1.15	@Auburn	-	-	-	-	-
1.23	@Illinois	-	-	-	-	-
1.30	Metroplex Challenge	-	-	-	-	-
2.05	Nebraska/TWU	-	-	-	-	-
2.12	Iowa State	-	-	-	-	-
2.19	@Missouri	-	-	-	-	-
2.26	@Michigan State	-	-	-	-	-
3.05	Alabama	-	-	-	-	-
3.12	Washington	-	-	-	-	-
3.19	@Arkansas	-	-	-	-	-
3.27	Big 12 Championship	-	-	-	-	-
4.10	NCAA Regional	-	-	-	-	-



NITYA RAMASWAMI

Date	Event	Vault	Bars	Beam	Floor	AA
1.08	Florida	-	-	-	-	-
1.15	@Auburn	-	-	-	-	-
1.23	@Illinois	-	-	-	-	-
1.30	Metroplex Challenge	-	-	-	-	-
2.05	Nebraska/TWU	-	-	-	-	-
2.12	Iowa State	-	-	-	-	-
2.19	@Missouri	-	-	-	-	-
2.26	@Michigan State	-	-	-	-	-
3.05	Alabama	-	-	-	-	-
3.12	Washington	-	-	-	-	-
3.19	@Arkansas	-	-	-	-	-
3.27	Big 12 Championship	-	-	-	-	-
4.10	NCAA Regional	-	-	-	-	-



NATALIE RATCLIFF

Date	Event	Vault	Bars	Beam	Floor	AA
1.08	Florida	9.750	-	9.675	-	-
1.15	@Auburn	-	-	-	-	-
1.23	@Illinois	-	-	-	-	-
1.30	Metroplex Challenge	-	-	-	-	-
2.05	Nebraska/TWU	-	-	-	-	-
2.12	Iowa State	-	-	-	-	-
2.19	@Missouri	-	-	-	-	-
2.26	@Michigan State	-	-	-	-	-
3.05	Alabama	-	-	-	-	-
3.12	Washington	-	-	-	-	-
3.19	@Arkansas	-	-	-	-	-
3.27	Big 12 Championship	-	-	-	-	-
4.10	NCAA Regional	-	-	-	-	-



MELANIE ROOT

Date	Event	Vault	Bars	Beam	Floor	AA
1.08	Florida	-	-	-	-	-
1.15	@Auburn	-	-	-	-	-
1.23	@Illinois	-	-	-	-	-
1.30	Metroplex Challenge	-	-	-	-	-
2.05	Nebraska/TWU	-	-	-	-	-
2.12	Iowa State	-	-	-	-	-
2.19	@Missouri	-	-	-	-	-
2.26	@Michigan State	-	-	-	-	-
3.05	Alabama	-	-	-	-	-
3.12	Washington	-	-	-	-	-
3.19	@Arkansas	-	-	-	-	-
3.27	Big 12 Championship	-	-	-	-	-
4.10	NCAA Regional	-	-	-	-	-

**KRISTIN SMITH**

Date	Event	Vault	Bars	Beam	Floor	AA
1.08	Florida	-	-	9.750	9.275	-
1.15	@Auburn	-	-	-	-	-
1.23	@Illinois	-	-	-	-	-
1.30	Metroplex Challenge	-	-	-	-	-
2.05	Nebraska/TWU	-	-	-	-	-
2.12	Iowa State	-	-	-	-	-
2.19	@Missouri	-	-	-	-	-
2.26	@Michigan State	-	-	-	-	-
3.05	Alabama	-	-	-	-	-
3.12	Washington	-	-	-	-	-
3.19	@Arkansas	-	-	-	-	-
3.27	Big 12 Championship	-	-	-	-	-
4.10	NCAA Regional	-	-	-	-	-

**SARA STONE**

Date	Event	Vault	Bars	Beam	Floor	AA
1.08	Florida	9.700	-	-	-	-
1.15	@Auburn	-	-	-	-	-
1.23	@Illinois	-	-	-	-	-
1.30	Metroplex Challenge	-	-	-	-	-
2.05	Nebraska/TWU	-	-	-	-	-
2.12	Iowa State	-	-	-	-	-
2.19	@Missouri	-	-	-	-	-
2.26	@Michigan State	-	-	-	-	-
3.05	Alabama	-	-	-	-	-
3.12	Washington	-	-	-	-	-
3.19	@Arkansas	-	-	-	-	-
3.27	Big 12 Championship	-	-	-	-	-
4.10	NCAA Regional	-	-	-	-	-

**HOLLIE VISE**

Date	Event	Vault	Bars	Beam	Floor	AA
1.08	Florida	-	9.850	9.900	9.825	-
1.15	@Auburn	-	-	-	-	-
1.23	@Illinois	-	-	-	-	-
1.30	Metroplex Challenge	-	-	-	-	-
2.05	Nebraska/TWU	-	-	-	-	-
2.12	Iowa State	-	-	-	-	-
2.19	@Missouri	-	-	-	-	-
2.26	@Michigan State	-	-	-	-	-
3.05	Alabama	-	-	-	-	-
3.12	Washington	-	-	-	-	-
3.19	@Arkansas	-	-	-	-	-
3.27	Big 12 Championship	-	-	-	-	-
4.10	NCAA Regional	-	-	-	-	-

2010 MEET-BY-MEET RECAPS

WEEK 1 - FLORIDA | JAN. 8, 2010

NORMAN, Okla. -- The No. 9 Oklahoma women's gymnastics squad led wire-to-wire in a 196.250-195.275 upset over fourth-ranked Florida in the Sooners' season opener on Friday in front of 1,325 fans at Lloyd Noble Center.

The victory over the Gators marked the highest-ranked opponent that OU has toppled under fourth-year head coach K.J. Kindler.

The Sooners improved to 23-2 in home meets under Kindler behind strong performances from veterans and newcomers alike, as Oklahoma picked up event titles on bars, beam and floor. OU also claimed individual event titles on each of those events as well, as Jackie Flanery (bars and floor), Hollie Vise (bars and beam) and Natasha Kelley (bars) claimed individual honors.

"This team (OU) came out with a whole other confidence that I've never seen before," said Kindler. "They didn't waiver when the door was opening, they didn't hesitate and they jumped in feet first. I was really impressed with that more than anything. They had a lot of confidence tonight."

OU opened the meet with a 48.950 on vault, paced by Mary Mantle's 9.85 from the anchor position. Mantle placed third in the individual standings on the apparatus, behind a pair of 9.875s from UF's Ashanee Dickerson and Maranda Smith. Flanery posted a 9.8 from the first spot, while freshman Bethany Neubauer matched Flanery's score in her first collegiate routine. Oklahoma took the early lead as Florida was forced to count a fall on bars (48.175).

The Sooners increased their lead to 98.125-97.425 through two rotations after a stellar bars set that resulted in the team event title. Flanery, Kelley and Vise all scored 9.85s to sweep the individual event honors for OU. Flanery's bar set marked a career best, while Kelley competed despite suffering a complete ACL tear less than two months ago. Reigning Big 12 bars co-champion Megan Ferguson tallied a 9.825, while Brie Olson scored a 9.8 in her collegiate debut.

Vise picked up her second individual victory of the night on beam (9.9), leading Oklahoma to its second event win of the evening. OU outscored the Gators 49.025-48.875 on the apparatus, as Ferguson (9.875) and Kelley (9.8) both posted solid routines.

The Sooners sealed the meet victory with an event-winning floor score of 49.100 - their third straight score of 49.000-plus on the night. Flanery picked up her second event title of the night (9.875), freshman Kayla Nowak (9.85) shared second in her debut, while Vise scored a 9.825 in her first collegiate routine on the apparatus.

"We hit 23-of-24 routines which is phenomenal for your first competition," said Kindler. "Now, there are always things we can do to improve, but I thought overall it was an excellent first meet. The freshmen and Natasha were phenomenal. They hit eight routines, out of eight, and were some of our highest scores. They definitely brought a level of confidence to our team.

Oklahoma improved to 42-6 in the regular season under Kindler.

V A U L T	1	Jackie Flanery	102	9.80	9.80				9.800
	2	Sara Stone	113	9.70	9.70				9.700
	3	Brie Olson	108	9.75	9.75				9.750
	4	Bethany Neubauer	106	9.75	9.85				9.800
	5	Natalie Ratcliff	110	9.75	9.75				9.750
	6	Mary Mantle	105	9.85	9.85				9.850

Vault Score: 48.950 Running Score: 48.950

B A R S	1	Jackie Flanery	102	9.85	9.85				9.850
	2	Brie Olson	108	9.80	9.80				9.800
	3	Kayla Nowak	107	9.80	9.75				9.775
	4	Megan Ferguson	101	9.85	9.80				9.825
	5	Natasha Kelley	103	9.90	9.80				9.850
	6	Hollie Vise	114	9.85	9.85				9.850

Bars Score: 49.175 Running Score: 98.125

B E A M	1	Natalie Ratcliff	110	9.70	9.65				9.675
	2	Kayla Nowak	107	9.65	9.75				9.700
	3	Natasha Kelley	103	9.85	9.75				9.800
	4	Megan Ferguson	101	9.90	9.85				9.875
	5	Hollie Vise	114	9.85	9.95				9.900
	6	Kristin Smith	112	9.80	9.70				9.750

Beam Score: 49.025 Running Score: 147.150

F L O O R	1	Mary Mantle	105	9.80	9.75				9.775
	2	Megan Ferguson	101	9.75	9.80				9.775
	3	Hollie Vise	114	9.85	9.80				9.825
	4	Kayla Nowak	107	9.85	9.85				9.850
	5	Kristin Smith	112	9.25	9.30				9.275
	6	Jackie Flanery	102	9.90	9.85				9.875

Floor Score: 49.100 Running Score: 196.250

Final Team Score: 196.250

All-Arounders

VT									
UB									
BB									
FX									
AA									